

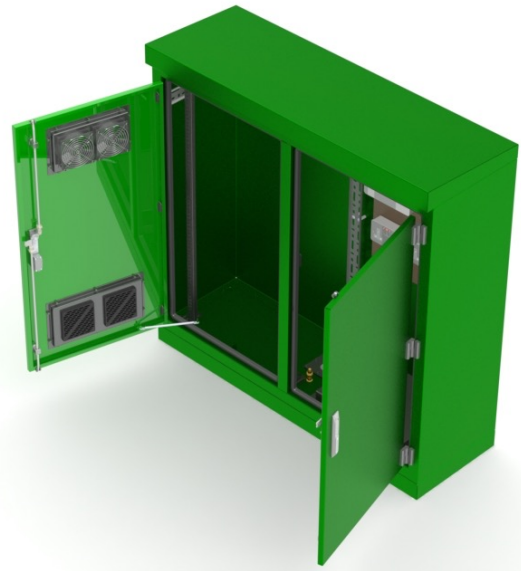
VOICE & DATA CABINET

Applications

- ❖ Telecommunications Equipment

Features:

- ❖ Manufactured from stainless steel 1.4003
- ❖ Powder coated finish
- ❖ 3 point locking mechanism with T key
- ❖ 2 door front access
- ❖ AC controlled cooling fans
- ❖ Touch safe heaters
- ❖ 19" rails
- ❖ Consumer unit with various MCB configs
- ❖ UPS/Battery tray



Optional Extras:

- ❖ Home office approved ASSA DESMO lock
- ❖ Unique key number
- ❖ Air Conditioning
- ❖ DC Fan Cooling System
- ❖ Meter viewing window
- ❖ Double Equipment Bay
- ❖ Meter Space

Various sizes and configurations available